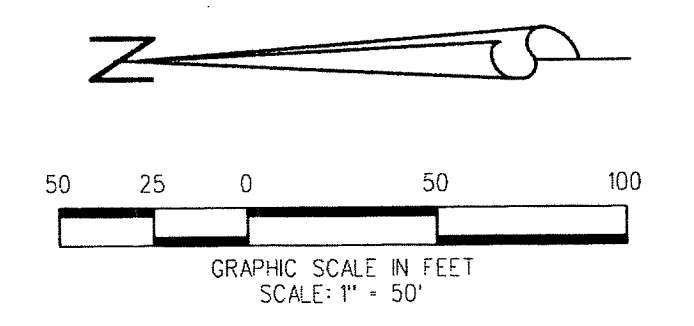
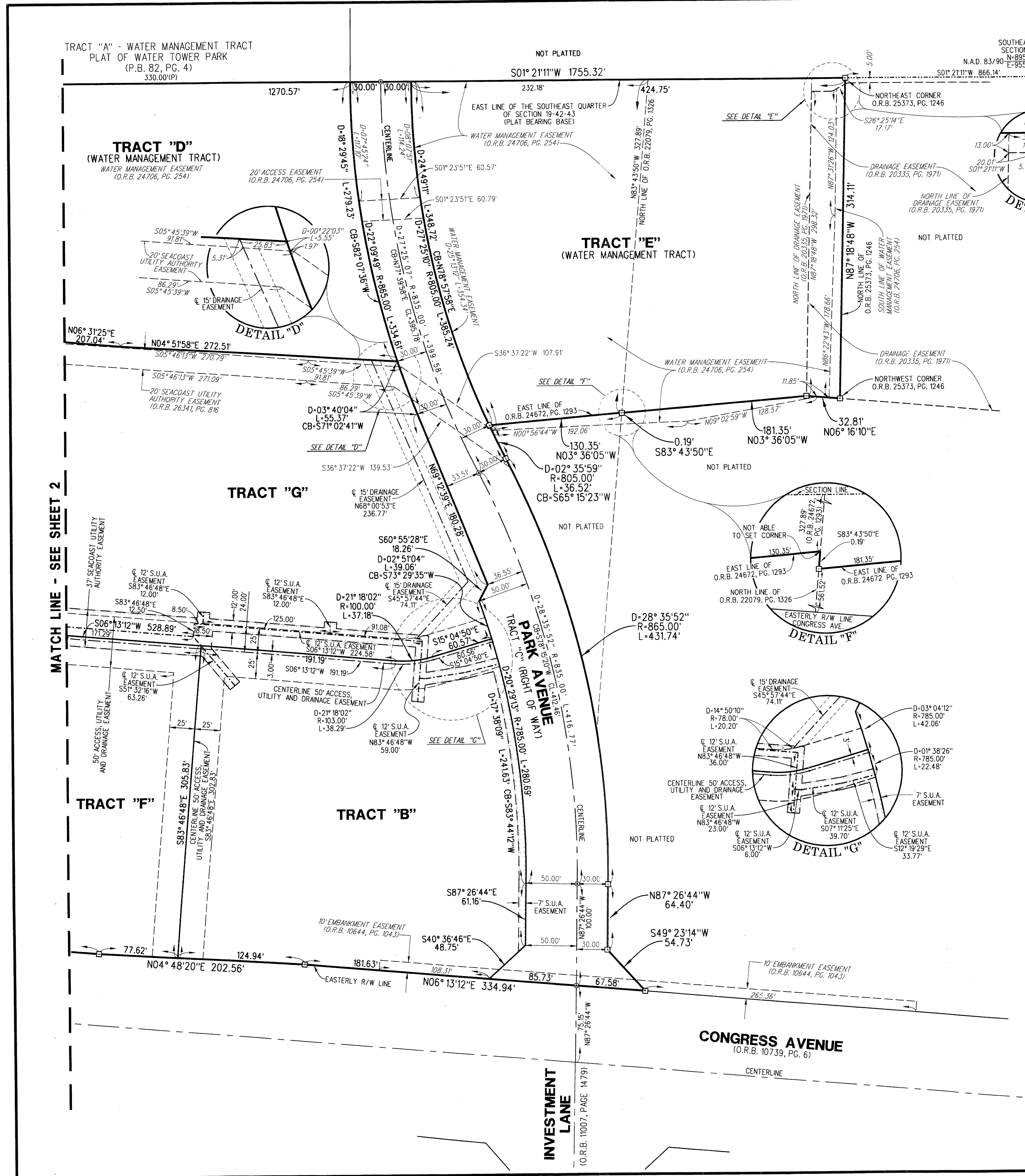


# CONGRESS BUSINESS PARK, A P.U.D.

BEING A PORTION OF SECTION 19, TOWNSHIP 42 SOUTH, RANGE 43 EAST, TOWN OF LAKE PARK, PALM BEACH COUNTY, FLORIDA  
SEPTEMBER 2014 SHEET 3 OF 3



- ABBREVIATIONS:**
- CB = CHORD BEARING
  - CL = CENTERLINE
  - CL = CHORD LENGTH
  - CONC. = CONCRETE
  - COR. = CORNER
  - D = DELTA
  - D.E. = DRAINAGE EASEMENT
  - L = ARC LENGTH
  - O.R.B. = OFFICIAL RECORD BOOK
  - MON. = MONUMENT
  - P.C.P. = PERMANENT CONTROL POINT
  - P.B. = PLAT BOOK
  - PG. = PAGE
  - PGS. = PAGES
  - P.O.B. = POINT OF BEGINNING
  - P.O.C. = POINT OF COMMENCEMENT
  - P.R.M. = PERMANENT REFERENCE MONUMENT
  - P.S.M. = PROFESSIONAL SURVEYOR AND MAPPER
  - R = RADIUS
  - S.U.A. = SEACOAST UTILITY AUTHORITY

- LEGEND:**
- ⊙ DENOTES PERMANENT CONTROL POINT (P.C.P.) SET MAG NAIL & DISK STAMPED "PCP LB4431" UNLESS OTHERWISE NOTED
  - ⊠ DENOTES PERMANENT REFERENCE MONUMENT (P.R.M.) SET 4"x4" CONCRETE MONUMENT WITH DISK STAMPED "PRM LB4431" UNLESS OTHERWISE NOTED

**LIDBERG LAND SURVEYING, INC.**  
 675 West Indiantown Road, Suite 200, Jupiter, Florida 33458 TEL. 561-746-8454  
 LB4431

CAD.	K:\JUST \ 194243 \ 99-240E-306 \ 99-240E-306.DGN		
REF.			
FLD.		PG.	JOB 99-240E-306
OFF.	CASASUS		DATE SEPTEMBER 2014
CKD.	D.C.L.	SHEET 3 OF 3	DWG. D99-240PP